

S40-P Process panel meter

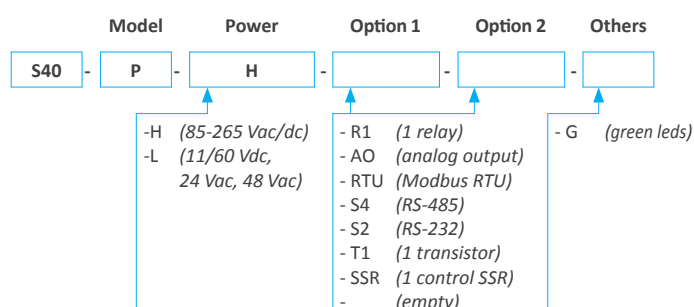
Panel meter with compact 72 x 36 mm size, and 14 mm digit height, for panel mount. Accepts 4/20 mA, 0/10 Vdc, ± 20 mA and ± 10 Vdc signals. Provides excitation voltage for the sensor. Universal high and low AC and DC power options. Optional output modules with relay, transistor, SSR control, analog outputs and MODBUS RTU communication.



Technical specifications

| | |
|------------------------------------|--|
| Digits | 4 |
| Reading | 9999 / -1999 |
| Decimal point | configurable |
| Led color | red or green |
| Digit height | 14 mm |
| Signal ranges | 4/20 mA, 0/10 Vdc, ± 20 mA, ± 10 Vdc, ... |
| Excitation voltage | +20 Vdc, +15 Vdc, +10 Vdc, +5 Vdc (max. 35 mA) |
| Accuracy | 0.05% F.S. ± 1 digit |
| Offset drift | 10 ppm/ $^{\circ}$ C |
| Span drift* | 25 ppm/ $^{\circ}$ C |
| | <i>*span drift value includes offset drift</i> |
| Readings | 15 readings / second |
| Refresh | 15 refresh / second |
| Response time | <120 mSec. (0 % to 99 % signal) |
| Input impedance | 11 Ohm in mA, 932 KOhm in Vdc |
| Power 'H' | 85 to 265 Vac/dc (isolated 2500 Veff) |
| Power 'L' | 11 to 60 Vdc and 24/48 Vac (isolated 1500 Veff) |
| Retransmission and control options | relays, analog output, serial communications, ... |
| Consumption | <1.5 W (meter only) <4.0 W (meter with options) |
| Protection front | IP54 |
| Connections | plug-in screw terminal |
| Weight | <150 grams |
| Mounting | panel |
| Front size | 72 x 36 mm |
| Panel cut-out | 69 x 32.5 mm |
| Deep | 98 mm (including terminals) |
| Operating temperature | 0 to 50 $^{\circ}$ C |

Order reference

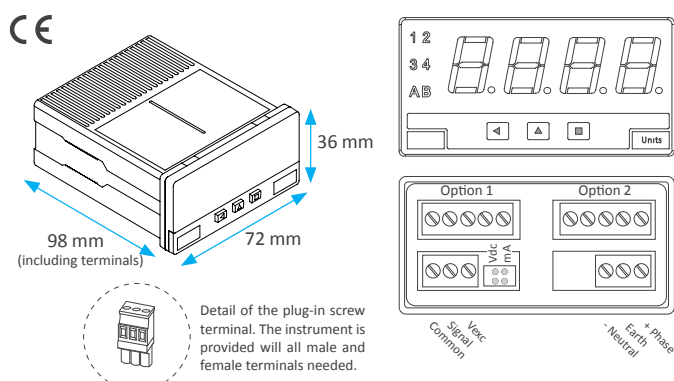


* Relays R1 with contacts (NC / NO / Common), max. 250 Vac 8 A
 * Special options with 4 relays.
 * Analog outputs and serial outputs, isolated.

Functions included

- Segment linearization. up to 20 segments for linearization of signals from irregular shaped volumes, tanker ships, ...
- 'Fast access' menu a single press on the front keypad gives access to alarm setpoint modification, special functions, memory of maximum and minimum reading, ...
- 'Field correction' function . . . for fast and easy offset corrections when installing on the field.
- 'On power-up' function protects remote systems by delaying the output and control signals at cold start-up.
- 'Measure' function for troubleshooting purposes, it displays the actual signal at input terminals, directly in mA or Vdc, without scaling.
- Alarms with one or two setpoints, independent activation and deactivation delays, hysteresis, optional manual deactivation of the relay.
- Inverted relay for security applications, relay can be configured with inverted function.
- 'Tare' function for weight applications.
- 'Peak & hold' function for test-break applications.
- Display filters recursive filters for noisy signals, optional reading in predefined steps, configurable fixed digits, ...
- Brightness 5 levels of brightness intensity.
- Password blocks access to configuration menu.

Dimensions and connections



| | | | | |
|-----------------------|------------------------------------|------------------------------|--|------------------------------|
| 45 YEARS 1969-2014 | Q ISO 9001 Certified Quality | CE EN-61010-1 Security | CE EN-61326-1 Electromagnetic C. | 5 YEARS Extended Warranty |
|-----------------------|------------------------------------|------------------------------|--|------------------------------|

Output and control options

| Model | Power | Option 1 | Option 2 | Others |
|-------|-------|----------|----------|--------|
| S40 | P | | | |

| | Function | Installable options | Isolated |
|--------|---|---------------------|----------|
| R1 | 1 relay output | 2 | yes |
| T1 | 1 transistor output | 2 | yes |
| SSR | 1 control for SSR relay | 2 | yes |
| AO | 1 analog output | 2 | yes |
| RTU | 1 Modbus RTU port | 2 | yes |
| S4 | 1 RS-485 port | 2 | yes |
| S2 | 1 RS-232 port | 2 | yes |
| R2, R4 | special modules up to 4 relay outputs. Check for information. | | |

Other options

Option G



Green leds

Accessories

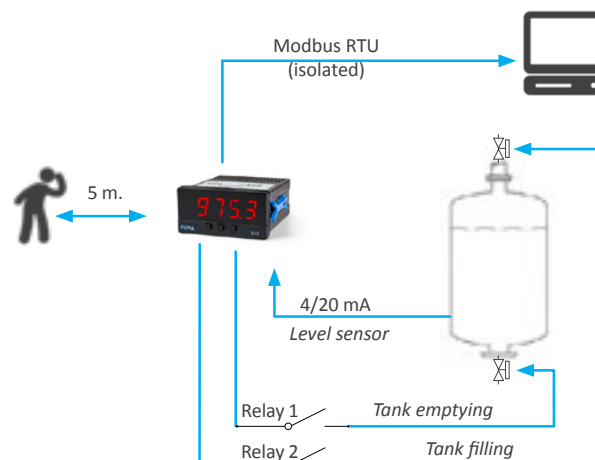
KA72



Adapter 72 x 72 mm

Application example

Measure of level from an irregular tank, with relay outputs to the solenoid valves that control the filling and emptying of the tank. Retransmission of the reading value to a remote SCADA of PLC unit through an isolated Modbus RTU bus.



Reading distances

| Digit height (mm) | 10 | 14 | 20 | 60 | 100 |
|-------------------|-----|------|-----|------|------|
| Reading distance | 4 m | 5 m | 8 m | 20 m | 40 m |
| Series | L | M, S | K | B2x | B4x |

Other meters for Process

Series M

4, 5 y 6 digits

digit height 14 mm
color red, green
vision 5 meters
size 96 x 48 mm

DIGITAL PANEL METER
SERIES M
Full Signal Ranges Available



Series K

Further view

digit height 20 mm
color red
vision 8 meters
size 96 x 48 mm

DIGITAL PANEL METERS
SERIES K
20 mm Digit Size



Series S

Compact size

digit height 14 mm
color red, green
vision 5 meters
size 72 x 36 mm

DIGITAL PANEL METERS
SERIES S
Compact Size 72x36 mm



45
YEARS

1969-2014

Q

ISO 9001
Certified Quality

CE

EN-61010-1
Security

CE

EN-61326-1
Electromagnetic C.

5
YEARS

Extended Warranty