

dataTaker - dEX Logger Software

- » Built-in software - no application to install
- » Runs directly from your web browser
- » Accessible by Ethernet or USB connection
- » Intuitive graphical interface
- » Easy-to-use configuration editor
- » Access live and historical data
- » View data charts, mimics and tables

What is dEX?

dEX is an intuitive graphical interface that allows you to configure your data logger, view real-time data in mimics, trend charts or tables and retrieve your historical data for analysis.

dEX runs directly from your web browser and can be accessed either locally or remotely, anywhere that a TCP/IP connection is available including worldwide over the Internet. You can use any of the logger's built-in communications ports to view dEX including Ethernet, USB and RS-232.

Warranty: All dataTaker Data Loggers are covered by a 3 year warranty on workmanship and parts. For further information on the dataTaker range, or for useful downloads, visit the dataTaker web site at www.datataker.com or contact your nearest dataTaker office or distributor.

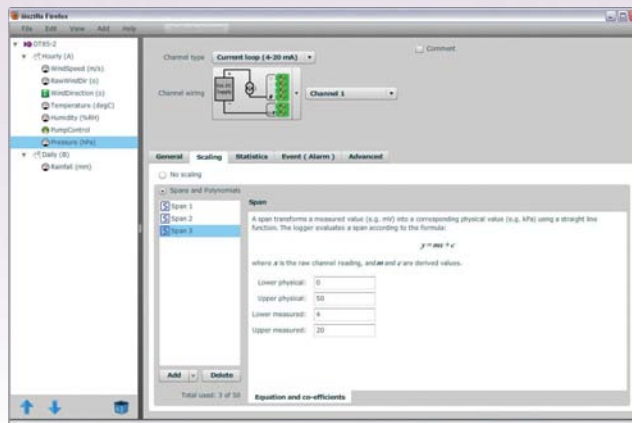
Quality Statement: dataTaker operates a Quality Management System complying with ISO9001:2008. It is dataTaker's policy to supply customers with products which are fit for their intended purpose, safe in use, perform reliably to published specification and are backed by a fast and efficient customer support service.

Trademarks: dataTaker is a registered trademark.

Specifications: dataTaker reserves the right to change product specifications at any time without notice. **Designed and Manufactured in Australia.**

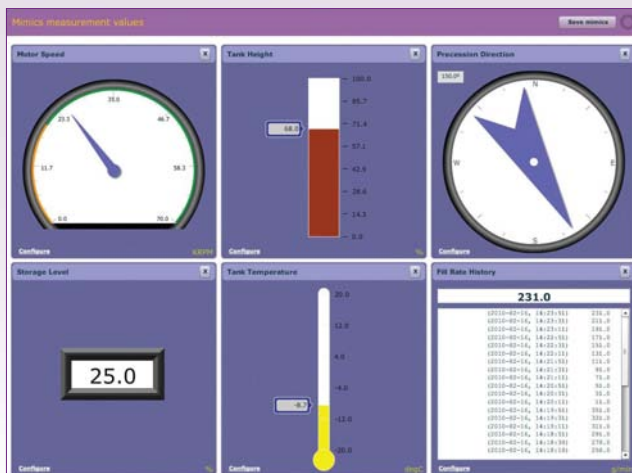
Easy configuration

The configuration editor allows you to view, edit and save logger configurations in an easy-to-use Windows Explorer style user interface.



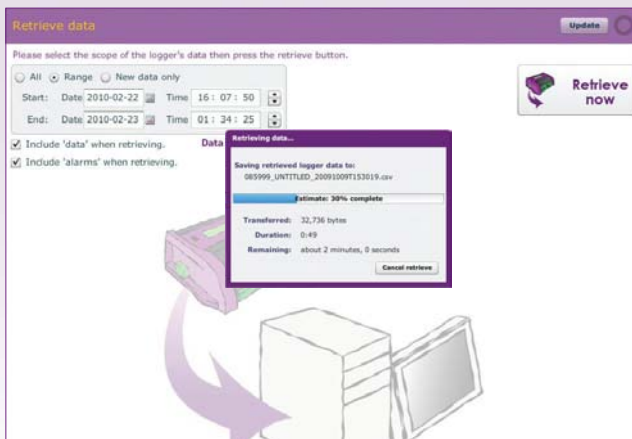
Real-time data

dEX displays real-time sensor measurements, calculations and diagnostic information, including mimics, tables and trend charts.



Data retrieval

dEX allows you to retrieve your data at the click of a mouse button. Just select either All, Range or New Data Only.



Browser-based solution

dEX comes pre-installed on every logger in the DT80 range¹. The software loads in your web browser so there is no need to install cumbersome applications on your computer. Being browser-based, dEX is cross-platform and will work on all major operating systems including Windows, Mac and Linux. To simplify it even further, dEX starts automatically in your default web browser when you connect to your logger using a USB cable.

Data that is compatible with your applications

Logged data is ready to import into common spreadsheet and data processing applications such as Excel for further analysis and reporting. Data can be saved to your computer in comma separated (.CSV) format or our proprietary binary (.DBD) format.

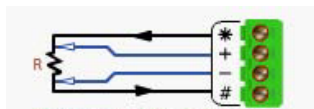
Command window

The command window provides a terminal interface which allows the built-in command language of the logger to be used. Macro buttons allow common commands to be sent on button press.

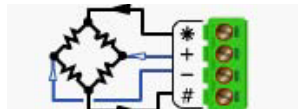
Configuration editor

The configuration editor allows you to view, edit and save logger configurations in an easy-to-use Windows Explorer style user interface. Tree view of configuration allows definition of measurement schedules and measurements.

Wiring diagrams show possible wiring configuration for selected sensor type. Configuration can be stored and retrieved on either the logger or a local computer.



Platinum RTD (4 wire)



Voltage bridge (+ / #)

Channel list

Displays name, value, units, alarm state, time stamp for each measurement.

Run	Name	Value	Units	Alarm	Time stamp	Log
✓	1hr_Humidity	51	%RH		2010-02-02, 12:00:00	✓
✓	1hr_Mean Win	0	m/s		2010-02-02, 12:00:00	✓
✓	1hr_Mean Win	7			2010-02-02, 12:00:00	✓
✓	1hr_Pressure	1006	hPa		2010-02-02, 12:00:00	✓
✓	1hr_Temperature	23.6	Deg C		2010-02-02, 12:00:00	✓
✓	1min_Humidit	48	%RH		2010-02-02, 12:32:00	✓
✓	1min_Mean Wi	0	m/s		2010-02-02, 12:32:00	✓

Customisation of the application

The ability to modify the menu options, mimics pages and mimics can be removed. The color and brand name and images of the data and status viewer can be customised.

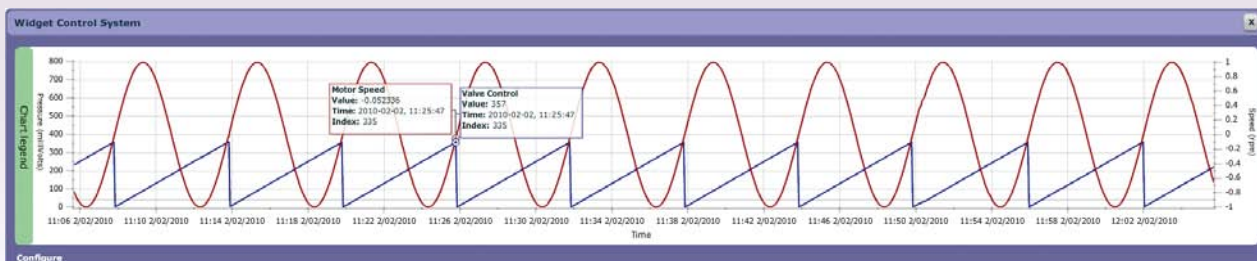
Mimics are organised into panels which can be modified to highlight custom alarm conditions or branding. Mimics include dials, bar graphs, thermometers etc. Real-time charts allow you to view trends and historical data over a custom time/date range. Up to 16 mimics can be displayed on up to 5 mimic pages (default is 1 page of 6 mimics). Mimic types include: dial, bar, thermometer, compass, digital, LED, state, history list, chart.

Minimum system requirements

- Browser (tested with): Internet Explorer, Firefox, Safari & Google Chrome
- TCP/IP connection
- Adobe flash player 10 or higher
- Designed for minimum screen resolution of 1024 x 768

Chart recorder mimic

Real-time trending for sensors, calculations or other data. Supports up to 5 traces per chart and up to 2 Y-axes. Backfills with historical data stored in logger.



¹ dEX operates on all DT80 range Series 2 models (DT8 , DT81, DT82E, DT85, DT80G, DT85G). The latest firmware which includes dEX is available for download from the dataTaker website. DT80 range Series 1 models do not support dEX.